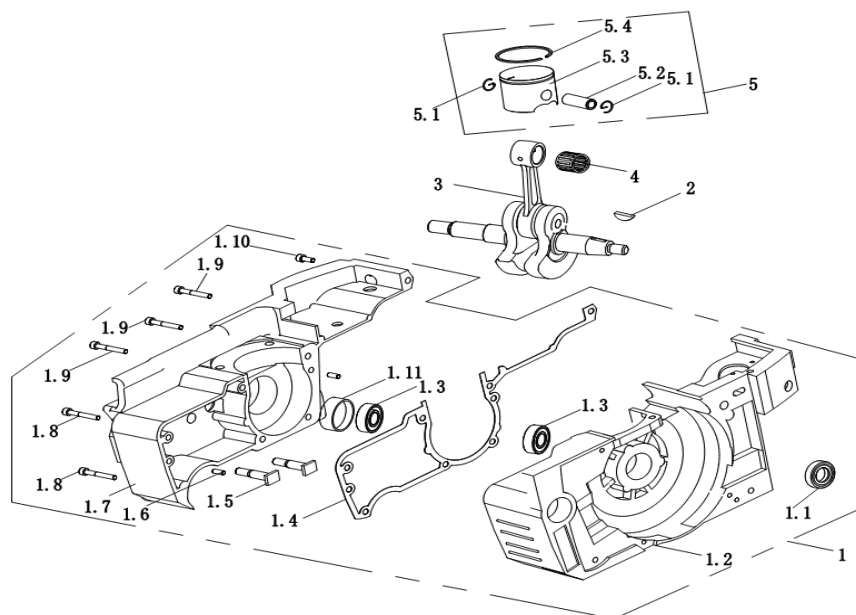


NT6260 Gasoline Chainsaw

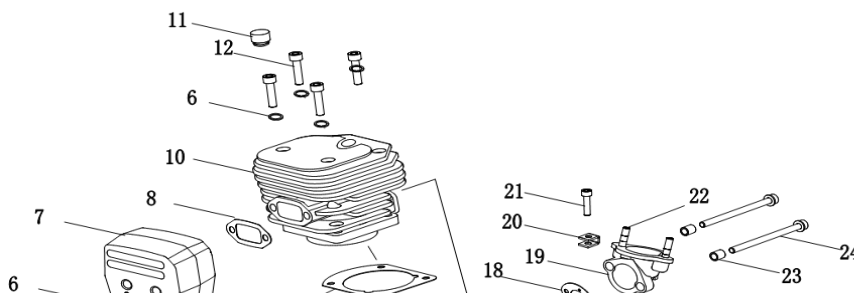


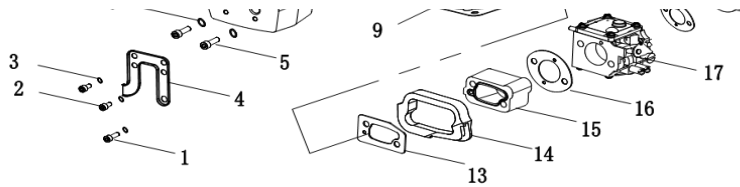
A 箱体曲轴组



NO.	CODE	BAR CODE	English name	Spanish name	Quantity
1	12.6210.920.11	1262109201118	Crankcase assembly	Conjunto del cárter	
1.1	96.12.152607.1	9612152607115	oil seal	Sello de aceite	
1.2	12.6210.201.03	1262102010311	Left case (white)	Estuche izquierdo (blanco)	
1.3	93.1.620200.01	9316202000115	bearing	Cojinete	
1.4	12.6210.803.02	1262108030214	Crankcase gasket	Junta del cárter	2
1.5	12.6210.304.01	1262103040119	Bar bolt	Tornillo de la barra	
1.6	94.10.05100.01	9410051000118	locating pin	Pasador de ubicación	
1.7	12.6210.201.22	1262102012216	Right case(white)	Estuche derecho (blanco)	
1.8	91.32.30.05501	9132300550112	screw M5X50	Tornillo M5X50	
1.9	91.32.30.05351	9132300535119	Crankcase screw M5X35	Tornillo de cárter M5X35	
1.10	91.32.20.05201	9132200520116	screw M5X20	Tornillo M5X50	
1.11	12.6210.307.10	1262103071014	steel bushing	Cojinete de acero	
2	94.70.031305.1	9470031305114	woodruff key 3x13x5	Cuña 3x13x5	
3	12.6210.353.01	1262103530115	crankshaft	Cigüeñal	
4	93.3.121515.02	9331215150213	needle bearing12x15x15	Cojinete de agujas 12x15x15	3
5	12.6210.902.01	1262109020115	piston assy	Conjunto del pistón	2
5.1	95.73.12010.01	9573120100116	G type piston retainer	Retenedor del pistón tipo G	
5.2	12.6210.314.05	1262103140512	piston pin	Pasador del pistón	
5.3	12.6210.243.01	1262102430119	piston	Pistón	
5.4	12.6210.351.01	1262103510117	piston ring	Anillo de pistón	

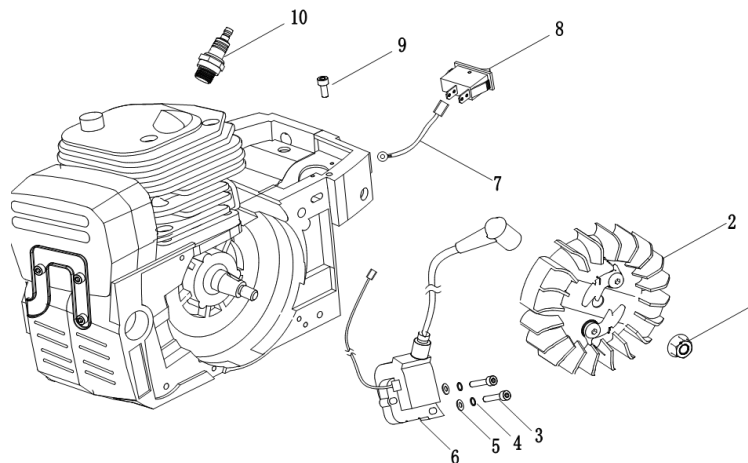
B 汽缸进排气组





NO.	CODE	BAR CODE	English name	Spanish name	Quantity
1	91.32.30.05141	9132300514114	screw M5x14	Tornillo M5x14	
2	91.32.30.05101	9132300510116	screw M5x10	Tornillo M5x10	
3	95.13.05000.01	9513050000117	spring washer 05	Arandela de resorte 05	
4	12.6210.330.01	1262103300114	muffler support	SopORTE del silenciador	
5	91.32.30.06201	9132300620112	screw M6x20	Tornillo M6x20	
6	95.13.06000.01	9513060000114	spring washer 06	Arandela de resorte 06	
7	12.6210.352.01	1262103520116	muffler	Silenciador	
8	12.6210.803.04	1262108030412	muffler gasket	Junta del silenciador	
9	12.6210.803.01	1262108030115	cylinder paper gasket	Junta de papel del cilindro	
10	12.6210.240.01	1262102400112	cylinder	Cilindro	2
11	12.6210.702.02	1262107020216	Washer	Arandela de resorte 06	
12	91.32.20.06251	9132200625118	screw M6x25	Tornillo M6x25	
13	12.6210.803.03	1262108030313	Inlet gasket	Junta de entrada	
14	12.6210.706.01	1262107060113	Inlet pipe rubber sleeve	Mango de goma del tubo de entrada	
15	12.6210.115.01	1262101150117	Inlet pipe	Tubo de entrada	
16	12.6210.803.05	1262108030511	carburetor gasket	Junta del carburador	
17	12.6210.880.01	1262108800114	carburetor	Carburador	
18	12.6210.702.03	1262107020315	rubber gasket (carburetor end)	Junta de goma (fin del carburador)	
19	12.6210.115.02	1262101150216	Intake elbow (screw inserted)	Codo de entrada (tornillo insertado)	
20	12.6210.205.01	1262102050119	Fixing plate	Placa de fijación	
21	91.32.30.04161	9132300416111	screw M4x16	Tornillo M4x16	
22	91.77.30.05221	9177300522110	screw M5x22	Tornillo M5x22	
23	12.3210.307.00	1232103070010	sleeve	Unión	
24	91.32.83.05801	9132830580115	carburetor screw M5x80	Tornillo de carburador M5x80	

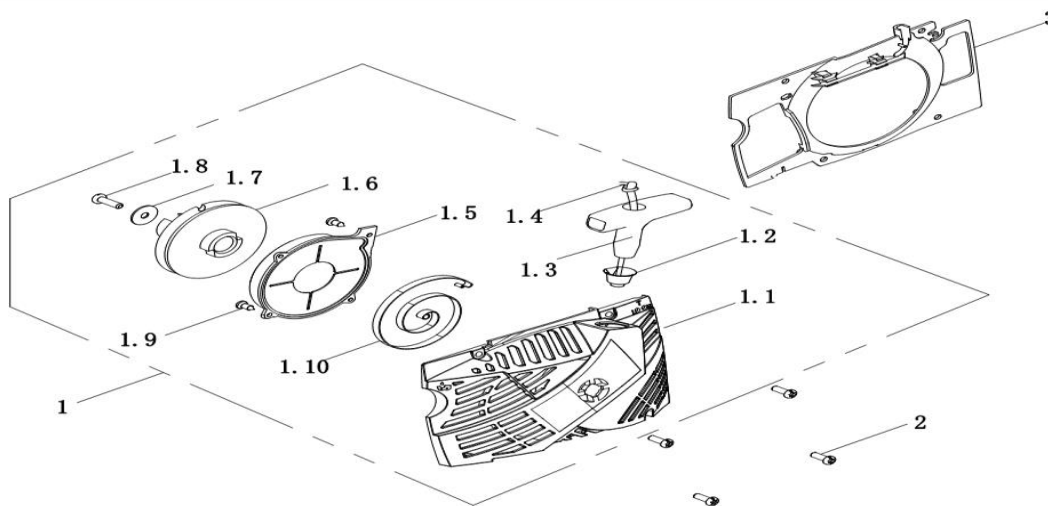
C 飞轮点火组件



NO.	CODE	BAR CODE	English name	Spanish name	Quantity
1	92.09.31.08001	9209310800114	flywheel screw M8	Tornillo de volante M8	
2	12.6210.242.02	1262102420219	flywheel	Volante	
3	91.32.30.04181	9132300418115	screw M4x18	Tornillo M4x18	
4	95.13.04000.01	9513040000110	spring washer 04	Arandela de resorte 04	
5	95.01.04000.01	9501040000117	flat washer 04	Arandela plana 04	
6	12.6210.420.02	1262104200215	ignition coil	Bobina de encendido	1
7	12.6210.402.01	1262104020110	wire	Alambre	

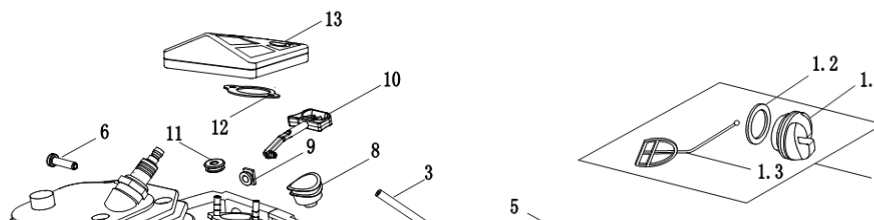
8	90.13.10300.01	9013103000113	stop switch	Interruptor de parada	2
9	91.32.30.04161	9132300416111	screw M4x16	Tornillo M4x16	
10	90.12.11406.01	9012114060116	spark plug	Bujia	

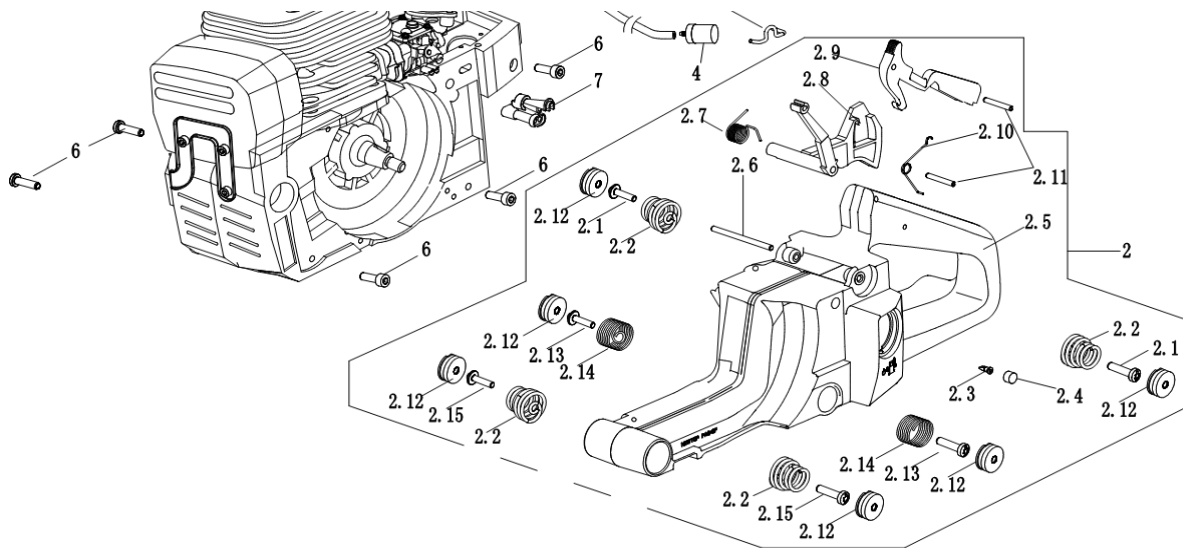
D 启动总成



NO.	CODE	BAR CODE	English name	Spanish name	Quantity
1	12.6220.918.03	1262209180313	starter assy	Junta de arranque	2
1.1	12.6220.102.13	1262201021317	Starter cover	Cubierta de arranque	
1.2	12.3210.317.01	1232103170116	Bushing	Cojinete	
1.3	12.3210.105.03	1232101050311	starter grip	Manija de arranque	
1.4	12.6210.820.01	1262108200112	Starter rope	Cuerda de arranque	
1.5	12.6210.122.10	1262101221015	COVER-SPRING STARTER	Cubierta de resorte de arranque	
1.6	12.6210.116.01	1262101160116	Starter reel	Carrete de arranque	
1.7	95.01.06180.01	9501061800116	flat washer $\phi 6 \times \phi 18$	Arandela plana $\phi 6 \times \phi 18$	
1.8	91.43.32.48161	9143324816115	screw ST4.8x16	Tornillo ST4.8x16	
1.9	91.23.32.36061	9123323606115	screw ST3.6x6	Tornillo ST3.6x6	
1.10	12.6210.610.01	1262106100117	Rewind spring assembly	Junta de resorte de rebobinado	
2	91.32.30.05141	9132300514114	screw M5x14	Tornillo M5x14	
3	12.6210.114.10	1262101141016	fan housing	Cubierta de ventilador	

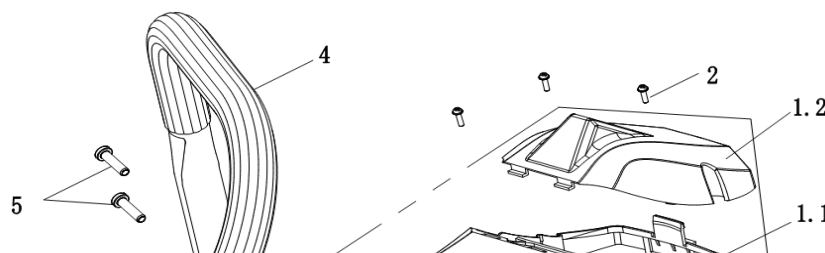
E 油箱及减震组

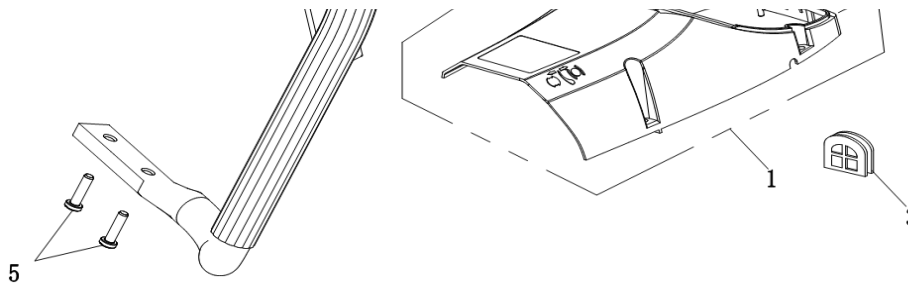




NO.	CODE	BAR CODE	English name	Spanish name	Quantity
1	12.6210.929.03	1262109290310	fuel tank cap	Tapa de tanque de combustible	
2	12.6210.920.03	1262109200319	fuel tank and rear handle assy	Tanque de combustible y junta de mango trasero	
2.1	91.69.32.48091	9169324809117	screw ST4.8x9	Tornillo ST4.8x9	
2.2	12.6210.602.11	1262106021115	buffer spring	resorte de aortiguacion	10
2.3	12.3710.708.01	1237107080119	ventilation valve	Válvula de ventilación	
2.4	12.3710.805.01	1237108050111	valve block	Bloque de válvula	
2.5	12.6210.124.03	1262101240313	Fuel tank	Tanque de combustible	
2.6	12.6210.314.03	1262103140314	pin	Pasador	
2.7	12.6210.603.02	1262106030216	Throttle spring	Resorte de acelerador	
2.8	12.6210.106.03	1262101060317	throttle lever	Palanca de acelerador	
2.9	12.6210.106.12	1262101061215	throttle interlock arm	Brazo de bloque del acelerador	
2.10	12.6210.603.03	1262106030315	Throttle spring	Resorte de acelerador	
2.11	94.63.03220.01	9463032200113	pin $\phi 3 \times 22$	Pasador $\phi 3 \times 22$	
2.12	12.3710.108.01	1237101080115	Spring base	Base de resorte	10
2.13	91.69.32.48161	9169324816115	screw ST4.8x16F	Tornillo ST4.8x16F	
2.14	12.3710.609.01	1237106090119	Spring	Resorte	
2.15	91.69.32.55161	9169325516113	screw ST5.5x16	Tornillo ST5.5x16	
3	12.6210.711.01	1262107110115	Fuel hose	Manguera de combustible	
4	90.14.03.04201	9014030420111	Fuel filter	Filtro de combustible	
5	12.6210.607.01	1262106070113	throttle rod spring	Resorte de caña de acelerador	
6	91.32.30.05141	9132300514114	screw M5x14	Tornillo M5x14	
7	12.6210.712.01	1262107120114	adjusting guide sleeve	Unión de guía de ajuste	
8	12.6210.701.01	1262107010118	dirt-proof cover	Cubierta a prueba de suciedad	
9	12.6210.704.01	1262107040115	choke rod sleeve	Unión de barra de estrangulación	
10	12.6210.123.03	1262101230314	choke rod (red)	Barra de estrangulación	
11	12.6210.701.02	1262107010217	dust cap	Tapa anti polvo	
12	12.6210.702.01	1262107020117	rubber gasket	Junta de goma	
13	12.6210.904.01	1262109040113	air filter assy	Junta de filtro de aire	10

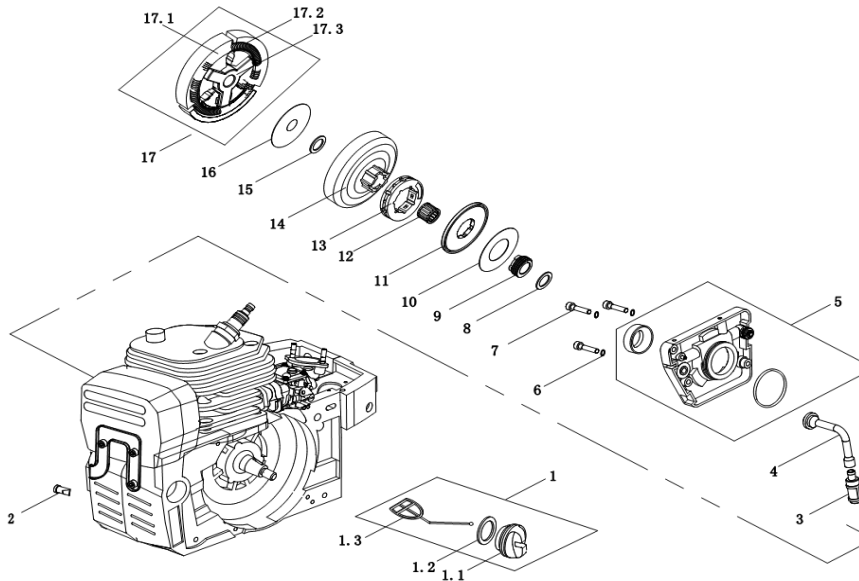
F 手把缸罩





NO.	CODE	BAR CODE	English name	Spanish name	Quantity
1	12.6210.939.01	1262109390119	cylinder cover assy	Junta de cubierta de cilindro	
1.1	12.6220.102.03	1262201020310	cylinder cover	Cubierta de cilindro	
1.2	12.6220.107.02	1262201070216	air filter cover	Cubierta de filtro de aire	
2	91.32.30.05141	9132300514114	screw M5x14	Tornillo M5x14	
3	12.6210.709.02	1262107090219	air window	Ventana de aire	
4	12.6210.818.02	1262108180216	front handle $\phi 21.5 \times 1.5$	Manija delantera $\phi 21.5 \times 1.5$	
5	91.69.32.48191	9169324819116	screw ST4.8x19	Tornillo ST4.8x19	

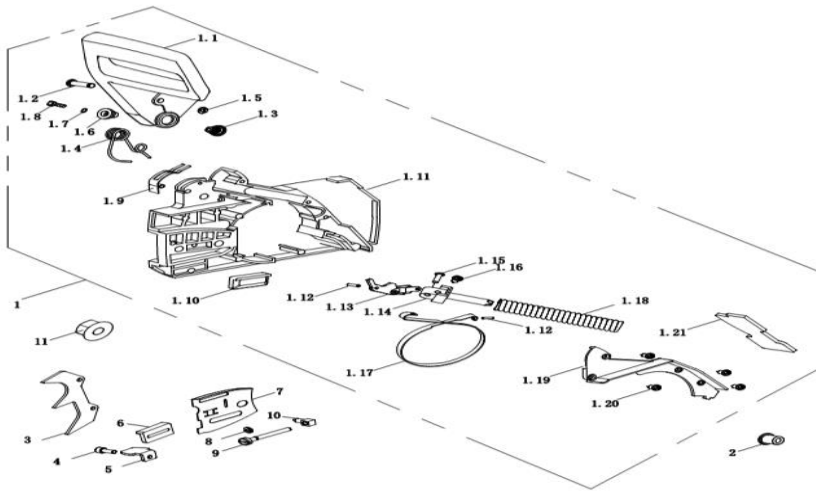
G 机油泵及离合器组



NO.	CODE	BAR CODE	English name	Spanish name	Quantity
1	12.3800.929.23	1238009292310	oil tank assy	Junta de tanque de aceite	
1.1	12.3800.122.25	1238001222513	oil tank cover	Cubierta de tanque de aceite	
1.2	12.3800.702.02	1238007020212	Sealing ring	Anillo de sellado	
1.3	12.3800.109.02	1238001090211	Fuel tank cap hangers	Colgadores de tapa de tanque de combustible	
2	12.4510.708.01	1245107080114	ventilation valve	Válvula de ventilación	
3	12.4510.805.10	1245108051014	oil filter	Filtro de aceite	
4	12.6210.711.02	1262107110214	oil inlet pipe	Tubo de entrada de aceite	
5	12.6210.930.01	1262109300118	oil pump assy	Junta de tubo de aceite	5
6	95.13.04000.01	9513040000110	spring washer 04	Arandela de resorte 04	
7	91.32.30.04141	9132300414117	screw M4x14	Tornillo M4x14	
8	12.6210.306.01	1262103060117	worm washer $\phi 13 \times \phi 15 \times 1$	Arandela de gusano $\phi 13 \times \phi 15 \times 1$	
9	12.6210.119.01	1262101190113	worm (plastic)	Gusano de plástico	

10	12.6210.308.06	1262103080610	antifriction plate of worm	Plato antifricción de gusano	
11	12.6210.122.01	1262101220117	oil pump cover	Cubierta de tubo de aceite	
12	93.4.131713.01	9341317130112	needle bearing	Cojinete de agujas	
13	12.6210.776.01	1262107760112	Rim (3/8-7 teeth)	Aro (dientes 3/8-7)	
14	12.6210.316.01	1262103160114	clutch drum (rim type)	Tambor de embrague (tipo aro)	
15	12.6210.308.05	1262103080511	small washer of clutch	Arandela pequeña de embrague	
16	12.4510.308.03	1245103080316	Clutch washer	Arandela de embrague	
17	12.6210.811.02	1262108110213	clutch assy	Junta de embrague	2

H 刹车及链板调节组



NO.	CODE	BAR CODE	English name	Spanish name	Quantity
1	12.6210.923.03	1262109230316	brake assembly	Junta del freno	
1.1	12.6210.114.02	1262101140217	front handle guard	Protector de la manija delantera	
1.2	12.3710.314.01	1237103140114	Pin	Pasador	
1.3	12.6210.307.02	1262103070215	Brake handle right pin	Pasador derecho de manija de freno	
1.4	12.6210.603.01	1262106030117	Spring	Resorte	
1.5	95.43.04000.01	9543040000117	snap ring 4	Anillo de retención 4	
1.6	12.6210.307.01	1262103070116	Brake handle left pin	Pasador izquierdo de manija de freno	
1.7	95.13.04000.01	9513040000110	spring washer 04	Arandela de resorte 04	
1.8	91.32.30.04161	9132300416111	screw M4x16	Tornillo M4x16	
1.9	12.3710.604.01	1237106040114	Brake vane	Paleta de freno	
1.10	12.6210.120.01	1262101200119	chain guide	Cadena guía	
1.11	12.6210.202.03	1262102020310	side cover	Cubierta lateral	
1.12	94.10.03090.01	9410030900118	pin 3x9	Pasador 3x9	
1.13	12.3710.330.01	1237103300112	main and sub brake lever	Palanca de freno principal y secundario	
1.14	12.3710.109.04	1237101090411	brake plunger	Émbolo de freno	
1.15	94.50.03130.00	9450031300012	screw GB/T 954 ϕ 3x13	Tornillo GB/T 954 ϕ 3x13	
1.16	91.23.32.35101	9123323510115	screw ST3.5x9.5	Tornillo ST3.5x9.5	
1.17	12.6210.320.01	1262103200117	break band	Banda de freno	
1.18	12.6210.602.01	1262106020118	brake spring	Resorte de freno	

1.19	12.6210.107.21	1262101072112	brake spring gland	Glándula de resorte de freno	
1.20	91.63.30.04081	9163300408110	screw M4x8	Tornillo M4x8	
1.21	12.6210.709.01	1262107090110	Rubber	Caucho	
2	12.6210.704.02	1262107040214	locating sleeve	Unión	
3	12.6210.318.01	1262103180112	spiked bumper	Parachoques con pinchos	
4	91.32.30.05141	9132300514114	screw M5x14	Tornillo M5x14	
5	12.6210.205.02	1262102050218	chain block	Bloque de cadena	
6	12.6210.120.01	1262101200119	chain guide (black)	Cadena guía	
7	12.6210.306.02	1262103060216	oil outlet cover plate	Placa de cubierta de salida de aceite	
8	95.43.04000.01	9543040000117	E buckle	Hebilla E	
9	91.13.30.05551	9113300555116	screw M5x55	Tornillo M5x55	
10	12.6210.321.01	1262103210116	adjusting nut	Tuerca de ajuste	
11	92.04.31.08001	9204310800119	screw M8	Tornillo M8	